

BOSCOM CATEGORY 6_A

24 Port Cat6_A 1RU Angled Jack 10Gb Shielded Patch Panel

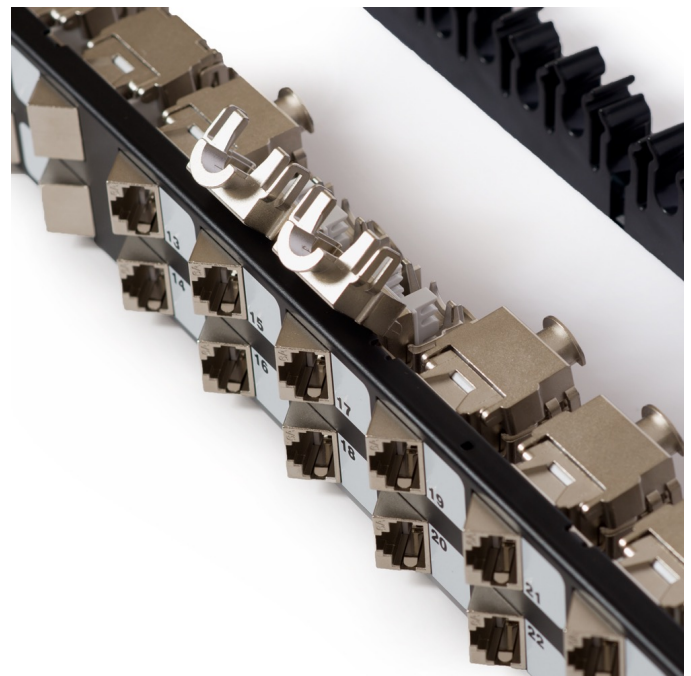
Product Description

The BOSCOM 24 Port Shielded Patch Panel with Angled Keystone Jacks is ISO11801 Class E_A Component Compliant, has been designed to alleviate strain on patch cords and eliminate or reduce the number of cable management bars required in 19" racking systems. The panel is flat (not angled) allowing more space between patch cords and cabinet door, with an over-under arrangement of the jack outlets for easy maintenance and a tidier appearance.

Boasting 500Mhz frequency for up to 10Gb of data file transfer while the robust Die-cast metal case provides protection against Alien Cross Talk (AXT).

Features

Frequency	1-500Mhz
Compatible Conductors	22-24AWG
Pin-Pair assignment	T568A & T568B
Contacts	50µ Gold Plating
Housing	Di-cast metal
Termination block	Tool-less IDC
Insertion/Withdrawal	750 cycles (minimum)
Cable re-termination	20 terminations



Configuration

Product Code	Item	Material
C6APP24CMSA	CAT6 _A 24 Port Shielded Patch Panel with Angled Tool-Less Keystone Jack	Metal Shielded

Standards and Compliance

- ISO/IEC 11801 Class E_A
- ANSI/TIA-568-C.2
- EN50173
- IEC 60603-7-51
- IEEE 802.3 PoE+
- UL94 V-O flame retardant, UV resistant